

**Project duration**

**36 months**

from 2023 to 2026.

**€ 14M funding**

**Circular Bio-based Europe Joint Undertaking (CBE JU)**

**17** EU partners from **4** European countries.

**6 SMEs** Arbiom, Biozoon, Centiv, Fibenol, PNO, Satt Sayens.

**4 large companies** Agromousquetaires through 3 entities (Agrom Services, Moulins de la marche, SVA Jean Rozé), Bel, Biomar, Normandise Pet Food.

**2 research organizations** IFEU - Institute For Energy and Environmental Research Heidelberg, Lyfe Institute Research and Innovation Center.

**1 laboratory** Eurofins.

**1 innovation cluster** Bioeconomy For Change.

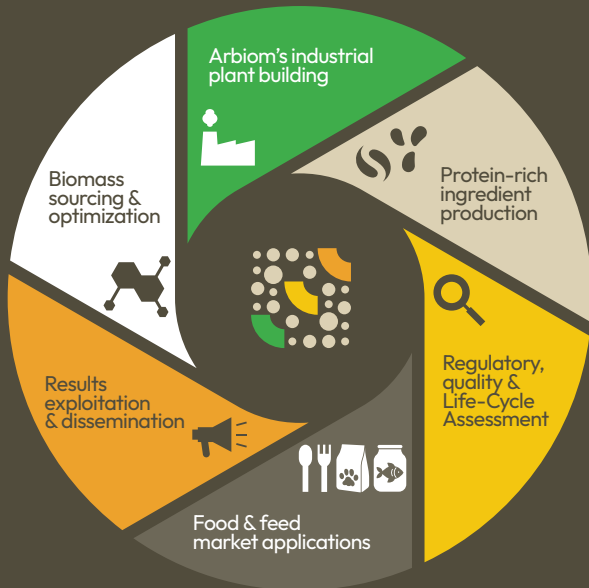
This project has received funding from the Circular Bio-based Europe Joint Undertaking (CBE JU) under grant agreement No 101112555. The JU receives support from the European Union's Horizon Europe research and innovation programme and the Bio-based Industries Consortium (BIC).

The CBE JU is a €2 billion partnership between the European Union and the BIC that funds projects advancing competitive circular bio-based industries in Europe. CBE JU is operating under the rules of Horizon Europe, the EU's research, and innovation programme for the 2021-2027 period.



Views and opinions expressed are however those of the author(s) only and do not necessarily reflect those of the European Union or CBE JU. Neither the European Union nor the CBE JU can be held responsible for them

Graphic design : [www.links-web.fr](http://www.links-web.fr)



**WWW.SYLPLANT.EU**



**@sylplant**



**Sylplant**



# CONTEXT & APPROACH

## BUILD THE FUTURE OF SUSTAINABLE PROTEIN PRODUCTION IN EUROPE

With an estimated population of 8.5 billion people by 2030, the world is facing the daunting challenge of meeting the growing demand for a **sustainable production of food**, while improving its quality. In the European Union, an additional supply chain challenge is at stake, since about **3/4 of the protein sources are imported**.

The **SylPlant** project aims to build and operate Arbiom's plant to produce at large scale protein-rich ingredients with one of the lowest environmental impacts. Made from fermentation of diverse carbon sources including lignocellulosic material and agricultural side streams, Arbiom's protein ingredients cover both human food (**Yusto®**) and feed (**SylPro®**) applications.



# OBJECTIVES

- **BUILD** and operate Arbiom's first industrial plant in France to reach 10.000 tons of annual production at full capacity.
- **OFFER** a European safe, local and sustainable protein supply.
- **DEVELOP** the next generation of foods with Yusto® such as cheese & meat analogs, and specialized nutrition products.
- **VALIDATE** the use of SylPro® in feed applications.
- **GATHER** consumer insights on SylPro® and Yusto®.

# EXPECTED IMPACTS

## ENVIRONMENTAL:

### FEEDSTOCK

- Reduce transportation of raw materials by using local and various carbon sources and cut down agricultural inputs.

### PRODUCTION

- Implement the best fermentation technology to maximize the productivity.

### INGREDIENTS

- Reduce animal effluents and wastes by ensuring high product digestibility.

## ECONOMICAL:

- Produce local high value ingredients from sustainable feedstocks with minimum environmental impacts.
- Reduce European protein imports with the development of circular bioeconomy.
- Support market uptake growth with new opportunities for biomass producers.

## SOCIAL:

- Secure existing jobs in strategic European industries, while creating new ones with the building of Arbiom's first plant.
- Raise public awareness and acceptance of bio-based solutions.

# APPLICATION FIELDS



## A multi-stakeholders project



## Contribution to sustainable development goals

